

# HG 11

# GP POWERTRAIN

Trustworthy Solutions For Marine Transmissions Since - 1971

## Hydraulic Marine Gear Box

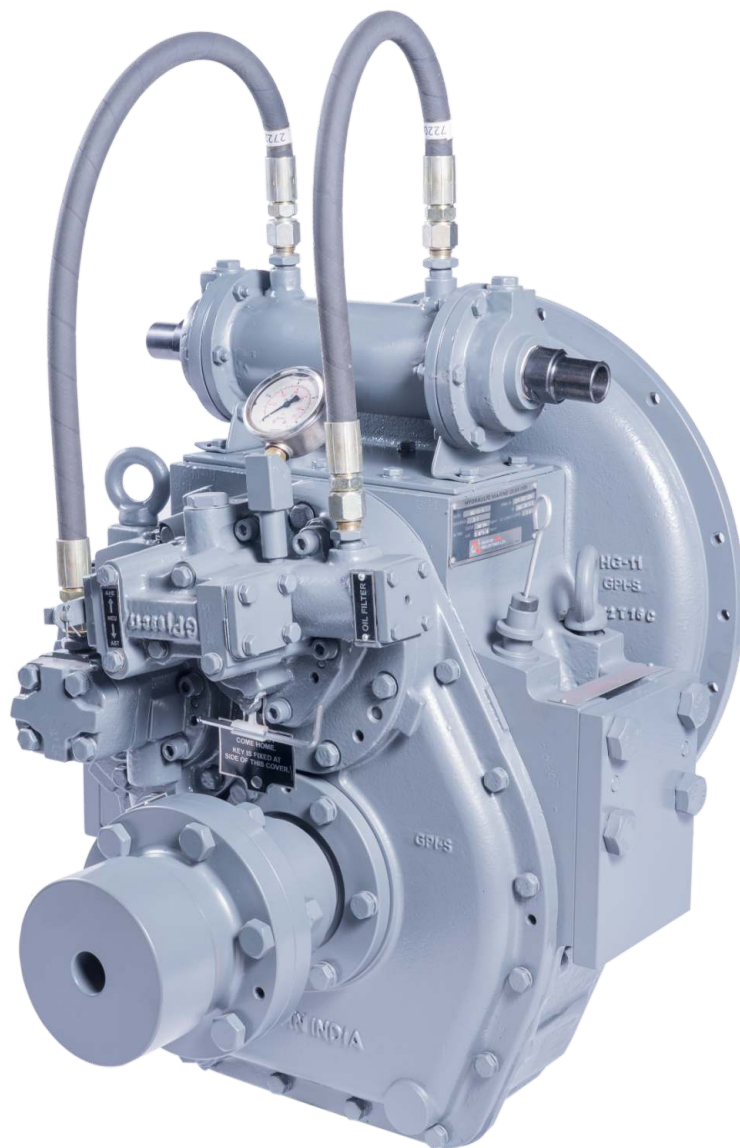
Specification	HG-11
Power Range in HP	150 TO 220
Continuous Torque in Kg-m	73
Maximum Speed in RPM	2500
Reduction Ratio	2:1, 3:1, 4:1, 5:1
Weight in Kg	250
Engine Mountings	SAE1, SAE2, SAE3

### Salient Features

- Smooth Actuation & High Reliability
- Equal power transmission in both Astern & Ahead direction
- Suitable for twin screw application
- Smooth and reliable hydraulic shifting with control lever
- Emergency come home facility
- Low maintenance

### Applications

- Fishing Boats
- Ferry Boats
- Passenger Boats
- RORO Vessels
- Tug Boats
- Catamaran



P3 SERIES ►POWER ►PERFORMANCE ►PROFIT

Powered by  
**GHATGE PATIL INDUSTRIES LTD.**



Service Help Desk  
(0231) 2608180/85  
marine@gpi.co.in



Approved By

**IRCLASS**  
Indian Register of Shipping

**GHATGE PATIL INDUSTRIES LTD.**  
UCHGAON, KOLHAPUR - 416005, INDIA.

Tel : +91(231) 260 8000 / +91(231) 260 8180 / +91(231) 260 8185  
Fax : +91(231) 260 8080 E-Mail : marine@gpi.co.in

www.gpi.co.in



Made In India

Authorised Dealer Information